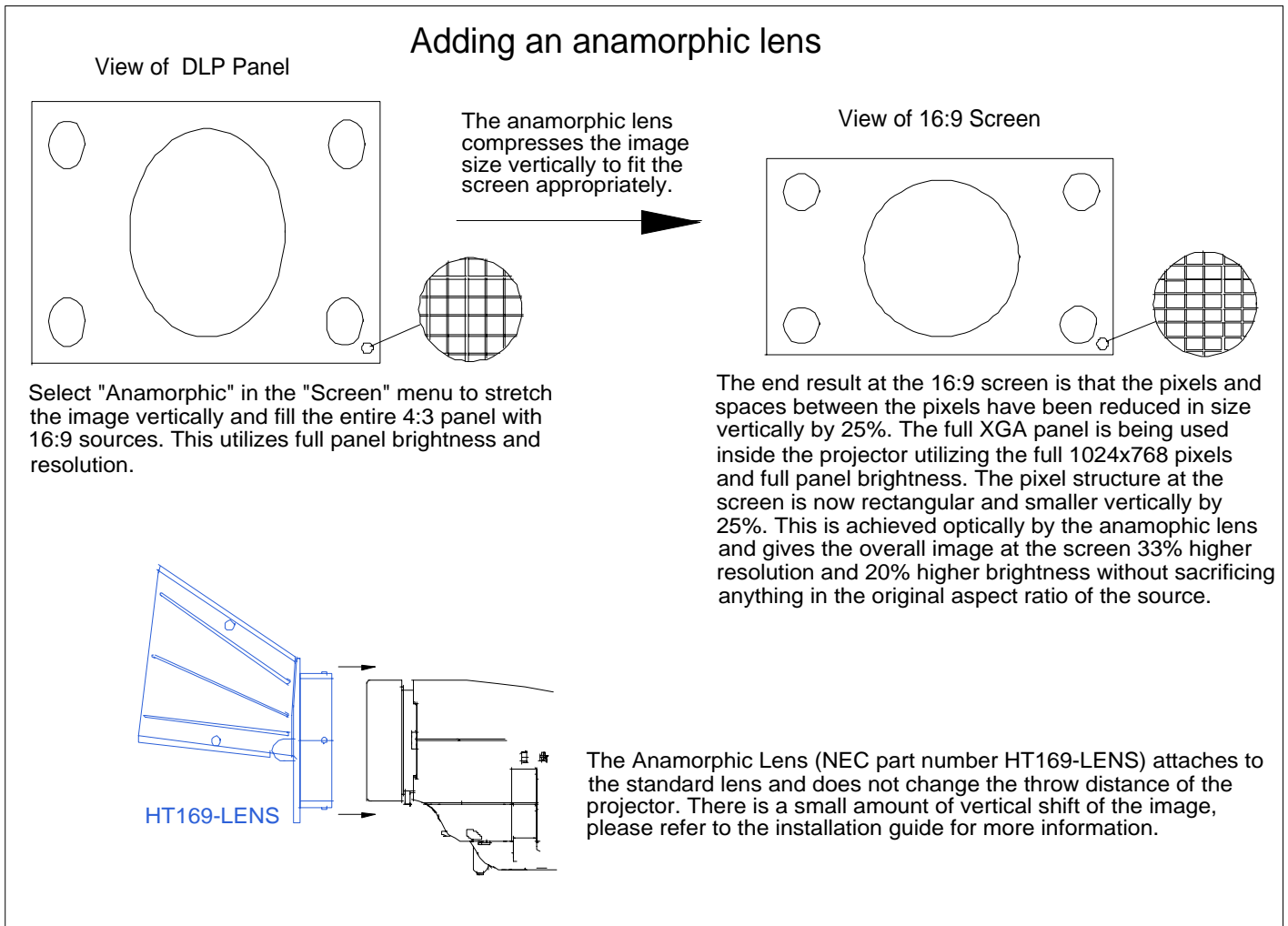
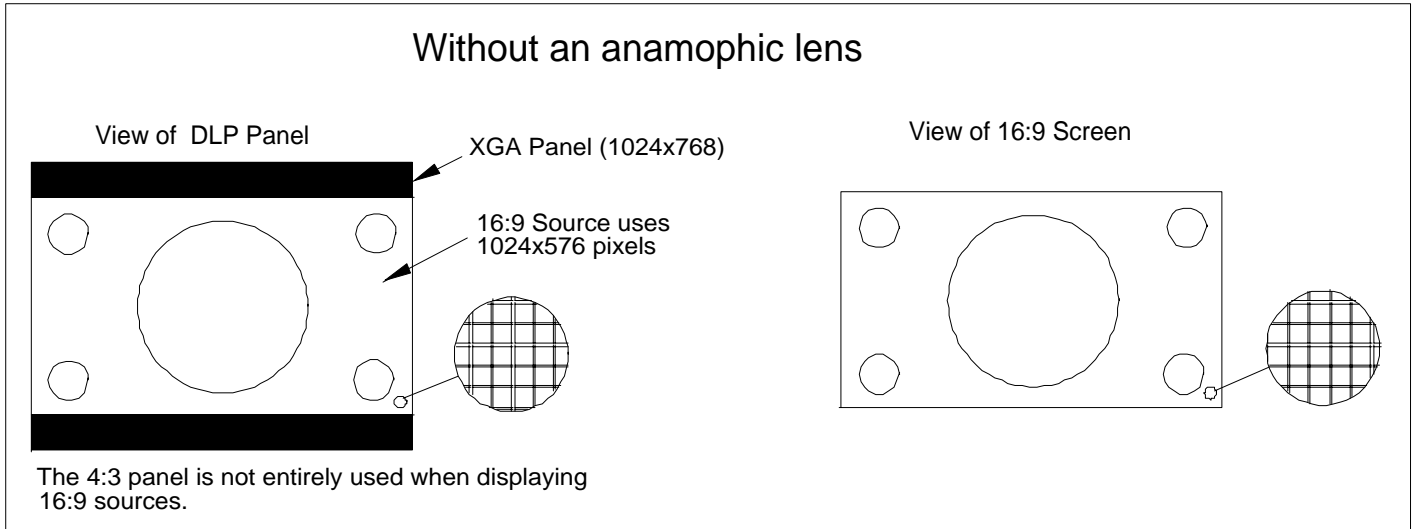


HT1000/1100 Anamorphic Lens (HT169-LENS)

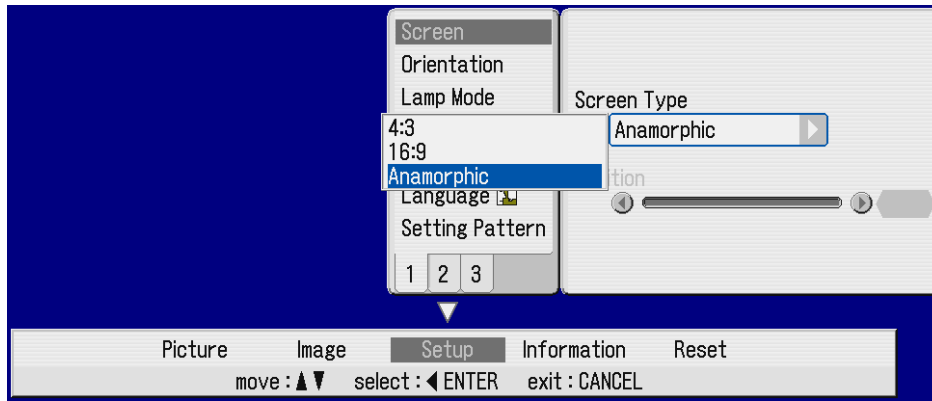
How it works

v1.3



Screen Menu

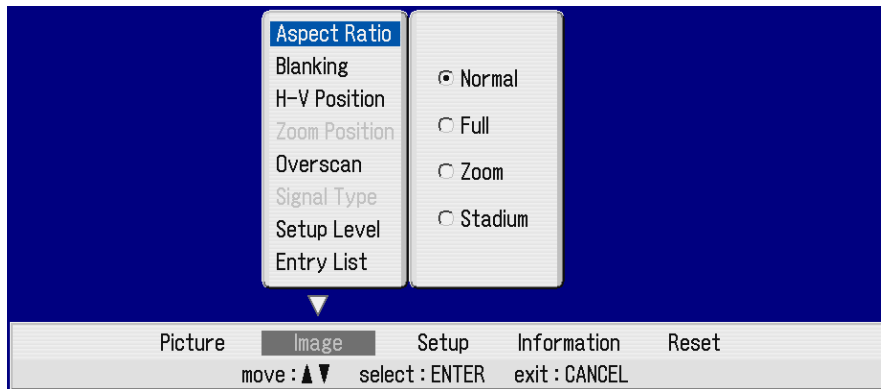
Below shows the selection of "Anamorphic" in the "Screen" menu.



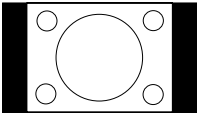
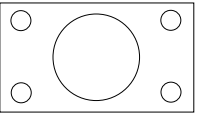
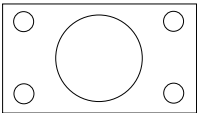
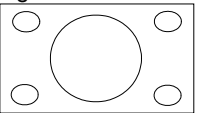
Aspect Ratio Control

Selecting "Anamorphic" in the "Screen" menu also makes aspect ratio control available so that 16:9 and 4:3 sources can fit the screen appropriately.

Below shows the selections available for Aspect Ratio Control in the "Aspect Ratio" menu.



Aspect Ratio descriptions in "Anamorphic" mode

<p>Normal (for 4:3 sources) 4:3 sources fill the screen vertically with black bars on the left and right (no cropping or distortion).</p> <p>768x768 pixels</p> 	<p>Zoom (for Letterbox sources) Letterbox sources fill the screen.</p> <p>1024x768 pixels</p> 
<p>Full (for Widescreen sources) 16:9 sources fill the screen.</p> <p>1024x768 pixels</p> 	<p>Stadium (for 4:3 sources) 4:3 sources fill the screen with nonlinear horizontal stretching. (Left and right sides stretched not middle)</p> <p>1024x768 pixels</p> 

Note: Aspect Ratio is not available for HDTV (720P/1080i/1080p)