

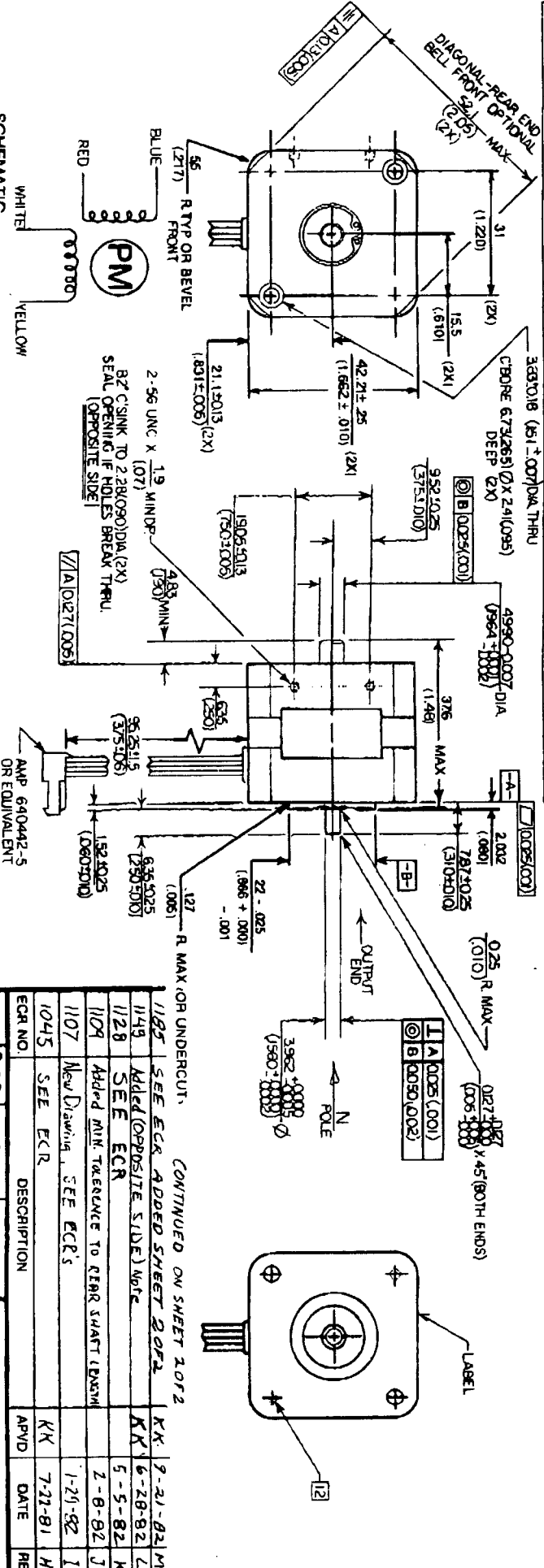
P/N 163408

SPECIFICATIONS:	ROTOR INERTIA: 20 G-CM ² (.28 MOISS)
STEPS PER REVOLUTION: 200	HOLDING TORQUE: 864 G-CM (.12 OZ-IN)/MIN.
STEP ANGLE: 1.8°	DETENT TORQUE: 36 G-CM (.05 OZ-IN)/MIN.
STEP TO STEP ACCURACY (NOTES 1, 2): ± 5%	DYNAMIC TORQUE: 504 G-CM (.7 OZ-IN)/NONK
POSITIONAL ACCURACY (NOTES 1, 3): ± 5%	INSULATION CLASS: B MIN.
DC PHASE RESISTANCE: 38 Ω ± 10% AT 25°C	BEARINGS: ABC 3, DOUBLE SHIELDED
PHASE INDUCTANCE: 52 mH ± 20% AT 1 KHZ	AMBIENT TEMP. RANGE: -7 TO +50 °C
PHASE VOLTAGE: 9.2 VDC	WEIGHT: 0.28 KG (.62 OZ) APPROX.
PHASE CURRENT: 240 MA (CONT.)	MODEL NO.: 017-200-02-ST
SHAFT RUNOUT: .002 (0.0005) T.I.R. MAX.	CLEANLINESS: CLASS 100 OUTPUT END FREE OF CON-TAMINANTS.
NON-REPETITIVE POSITION ACCURACY: ± 1%	
RADIAL PLAY:	
END PLAY: (NOTE 9) (0.003 (0.001) TO 0.025 (0.001) W/A 1.36 KG (.3 LB) AXIAL LOAD APPLIED TO OUTPUT END OF SHAFT.	

4017-806

NOTES:

1. MEASUREMENTS MADE AT RATED CURRENT EACH PHASE.
2. BETWEEN ANY TWO ADJACENT STEP POSITIONS.
3. MAXIMUM ERROR IN 98%.
4. HI POT A.C.: 500V, 1 MIN.
5. LEADS: 4, AWG 26, .7 STRAND MIN. UL AND CSA APPROVED, PVC INSULATION.
6. INSULATION RESISTANCE: 100 MQ AT 500 VDC.
7. AT 300 FPS 24 VDC 62 OHM SERIES RESISTOR EACH PHASE.
8. BALL BEARINGS SEAL ON OUTSIDE-OUTPUT END.
9. SHAFT PRELOAD: THE SHAFT SHALL RETURN TO ITS ORIGINAL POSITION WITHIN .0005 (0.0002) AFTER APPLYING AND REMOVING A 1.36 KG (.3 LB) AXIAL LOAD TO OUTPUT END OF SHAFT.
10. END BELLS ARE STEEL FOR MAGNETIC SHIELDING.
11. FINISH: SINKCOAT GR-303 (BLACK) OR ENG. APPROVED EQUIVALENT.
12. SCREWS MUST BE FLUSH OR BELOW STEPPER FACE.
13. BURN IN OF 96 HRS. REQUIRED AT 150° F.



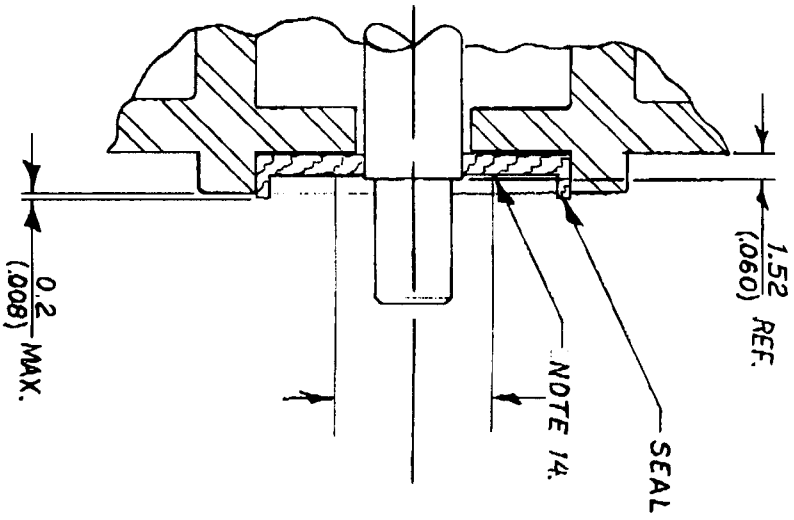
SCHEMATIC		SWITCHING SEQUENCE FOR CW ROTATION		
FACING MOUNTING END		FACING MOUNTING END		
STEP	BLUE ^(A)	RED ^(B)	WHITE ^(C)	YELLOW ^(D)
0	-	+	+	-
1	+	-	+	-
2	+	-	-	+
3	-	+	-	+
4	-	+	+	-

MOTOR OUTLINE

DESCRIPTION	DATE	REV
1105 SEE ECR	7-21-81	H
1107 New Drawing, SEE ECR'S	1-21-82	J
1109 Added MIN TOLERANCE TO REAR SHAFT (ENH)	2-8-82	K
1128 SEE ECR	5-5-82	L
1149 Added (OPPOSITE SIDE) NOTE	6-28-82	M
1185 SEE ECR, ADDED SHEET 2 OF 2	9-21-82	N

DWG NO. R08	1-18-82	SCALE: 1X
CHKD APVD	1-28-82	MATERIAL
HEAT TREAT		FINISH NOTE: II
APPLARD MOTOR PRODUCTS, INC. SCOTT'S VALLEY, CA 95066		
DWG. NO. 4017-806		


SPECIFICATIONS:



4017-806

NOTES:
 14: SEAL: THE SEAL LIP SHALL NOT EXTEND BEYOND 1.52 (.060) SHAFT DIMENSION FOR A MINIMUM DIA. OF 9.5 (.375).

UNLESS OTHERWISE SPECIFIED	ALL DIMENSIONS TO BE IN INCHES
FRACTIONS TO BE IN 16ths	DECIMALS TO BE IN 10ths
ANGLES TO BE IN DEGREES	TOLERANCES TO BE
FINISHES TO BE AS SHOWN	UNLESS OTHERWISE SPECIFIED
ALL DIMENSIONS TO BE TO CENTER UNLESS OTHERWISE SPECIFIED	

1199	Changed tolerance on front shaft length	APVD	10-13-82	N
ECH NO.	DESCRIPTION	APVD	DATE	REV
DWG	ROB	9-17-82	SCALE	4X
CHKD	KK	9-21-82		
APVD				
APVD				
HEAT TREAT				
TITLE				
SEAL DETAIL				
DWG. NO. 4017-806		SHEET 2 OF 2		
 <p>APPLIED MOTION PRODUCTS, INC. SCOTT'S VALLEY, CA. 95066</p>				
MATERIAL		FINISH		